

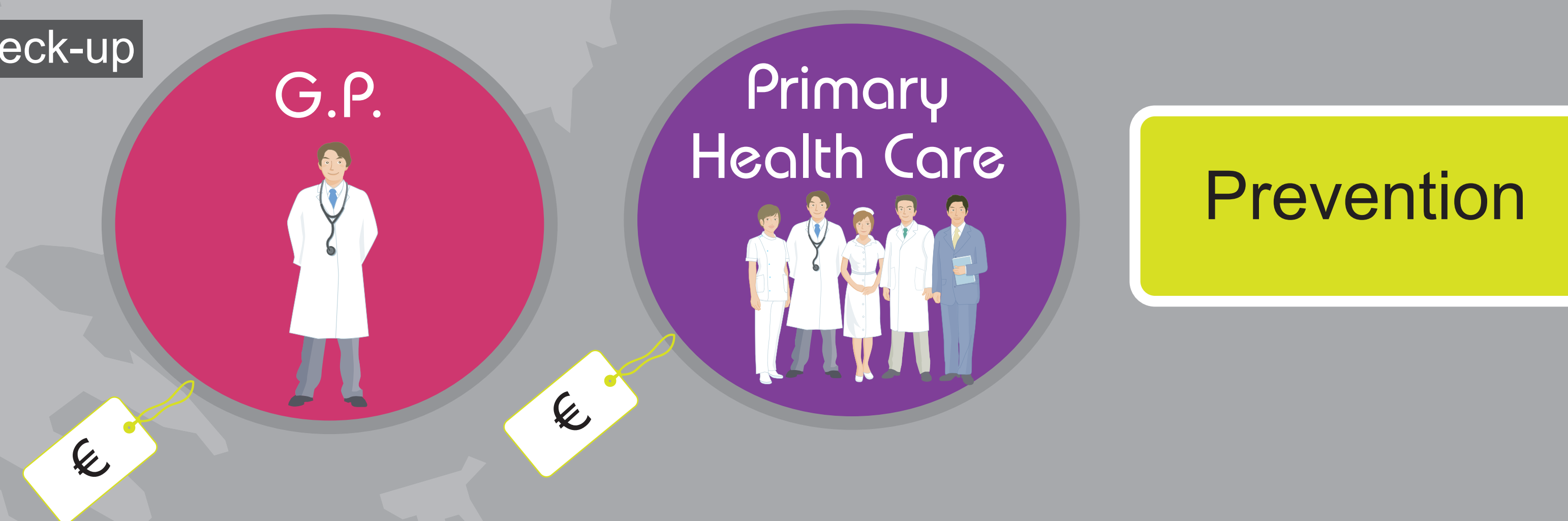
Calendar of years of dementia's evolution

-5
-4
-3
-2
-1
0
+1
+2
+3
+4
+5

Diagnosis of Dementia - Emergency Case

Regular screening and early diagnosis could help as there is no prevention for dementia so far. although training of carers in the prevention of accidents and acute confusional episodes is important.

It's family's responsibility to schedule the check-up



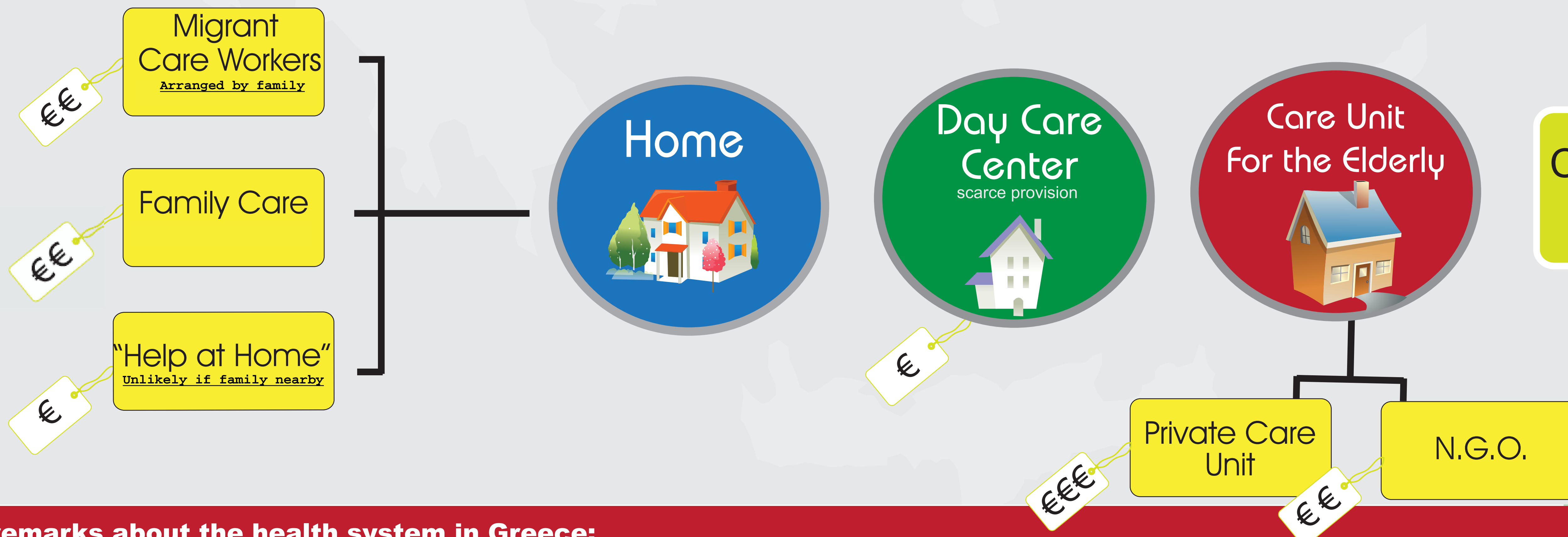
Care in emergency situations could be given in public or private hospitals

It's the family's responsibility to arrange the procedure



After hospital discharge it's the family's responsibility to decide the type of care that will be provided.

There are the 3 alternatives presented here which could be seen separately or in combination (e.g. home + day care centre or home + care unit only for vacation or for short periods)



BUREAUCRACY

Some general remarks about the health system in Greece:

1. Complex needs of patients usually are not met in the public sector –the coverage is basic with many inequalities depending on the social insurance fund.
2. There is no continuity of care. Health services do not function upon a "case management model" but on the basis of everyday clients, i.e. firefighting model.
3. The Alzheimer societies provide the majority of help, advice, practical support and continuity of care to patients and families who contact them.
4. There is a huge lack of outreach services to the population – the client has to ask for help on his own, or his/her family or broader social network should do this. The Church and Greek Red Cross social services play a major role in filling the gaps in community public service provision.

Index

- € = Free or low contribution of the patient
- €€ = Average contribution of the patient
- €€€ = Full contribution of the patient